

CN Series

Double Pole Power Rocker Switches



Description

The CN series double pole power rocker switch is a quality, long-lasting switch designed for use in power supply, industrial equipment and HVAC products. Featuring optional illumination and multiple actuator and termination styles, the robust design of the CN series guarantees to make your products stand out.

Features & Benefits

- Illuminated versions available
- Multiple actuator and termination styles
- Robust design
- Custom version upon request
- RoHS compliant

Applications

- Appliances
- Office equipment
- Computers and peripherals
- Off-road vehicles
- Industrial machines
- HVAC units
- Transportation

Agency Approvals

Agency	Agency File Number
	E42363

Specifications

Contact Rating	See table for Q and QA ratings on the last page of this series.
Electrical Life	10,000 make-and-break cycles at full load.
Dielectric Strength	1,500 Vrms min. @ sea level
Insulation Resistance	10 ⁹ Ω min.
Operating Temperature	-20°C to 85°C

Materials

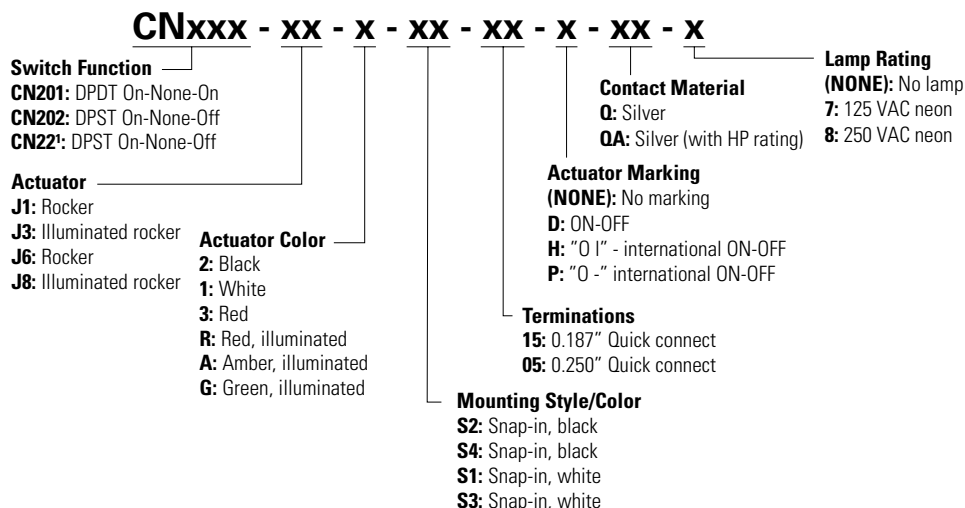
Actuator & Housing	6/6 nylon (UL 94 V-2), black, matte finish
Illuminated Actuator	Polycarbonate, matte finish
Center Contacts	Silver plated, copper alloy
End Contacts	Silver plated Ag ₂ SuO ₂ InO ₃
All Terminals	Silver plated, copper alloy

Notes:

Specifications and materials listed above are for switches with standard options. For information on specific and custom switches, consult Customer Service Center.

Ordering Number

To order, simply select desired option from each category and place in the appropriate box. For additional options not shown in catalog, consult Customer Service Center.



Notes:

1. CN22 — for switches with both marking and illumination

CN Series

Double Pole Power Rocker Switches

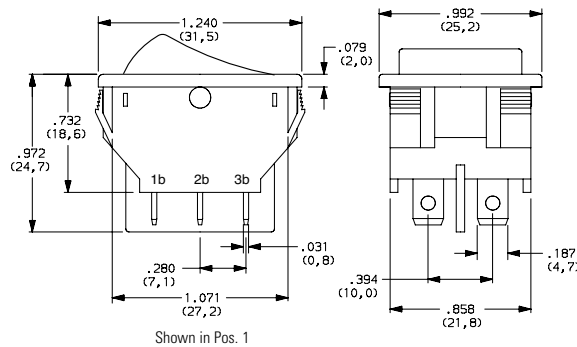


Switch Function

No. Poles	Model No.	Switch Function			Connected Terminals			Schematic
		C&K marking on opposite side						
		POS.1 	POS.2 	POS.3 	POS.1 	POS.2 	POS.3 	
DP	CN201	ON	NONE	ON	2-1, 4-5	N/A	2-3, 6-5	
DP	CN202	ON	NONE	OFF	2-1, 4-5	N/A	OPEN	 For Illuminated Version
DP	CN22 ¹	ON	NONE	OFF	2-1, 4-5	N/A	OPEN	

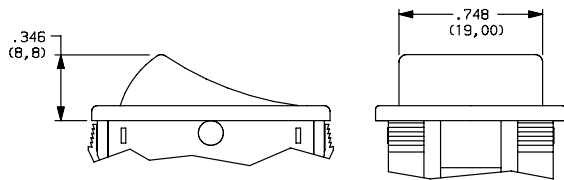
Note:
1. CN22 — for switches with both marking and illumination

Inches (mm)



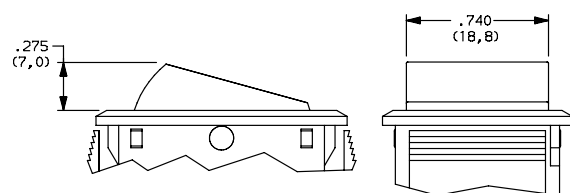
Actuator inches (mm)

J1 Rocker J3 Illuminated Rocker



Note: J1 & J3 actuators available with Q contact rating only. J3 actuator available with CN202 & CN22 switch function only.

J6 Rocker J8 Illuminated Rocker



Notes: J6 & J8 actuators available with QA contact rating only. J6 actuator available with CN201 & CN202 switch functions, J8 actuator available with CN202 & CN22 switch function only.

Option Code	Actuator Color
2	Black
1	White
3	Red
R	Red, Illuminated
A	Amber, Illuminated
G	Green, Illuminated

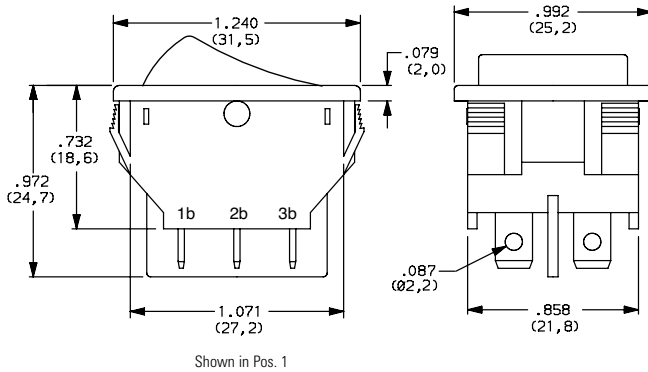
CN Series

Double Pole Power Rocker Switches



Mounting Style/Color inches (mm)

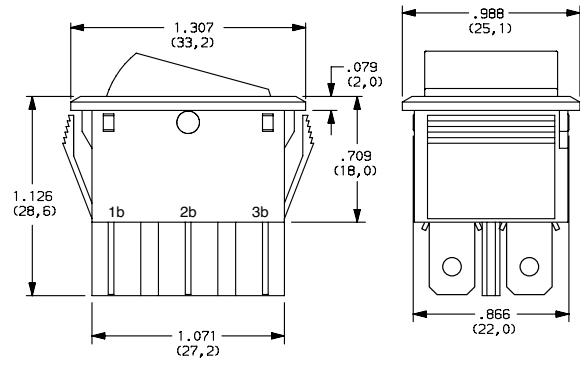
S2 Snap-in, Black
S1 Snap-in, White



Shown in Pos. 1

Note: Available with 15 termination and Q contact rating only.

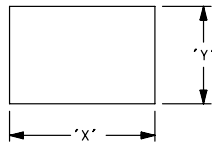
S4 Snap-in, Black (Short-Frame)
S3 Snap-in, White



Shown in Pos. 1

Note: Available with 05 termination and QA contact rating only.

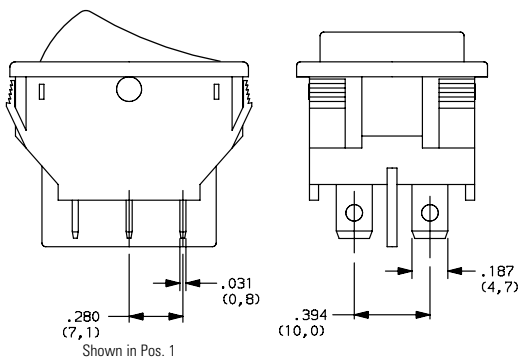
Panel Mounting



Panel Thickness	"X"	"Y"
0.030-0.049 (0.75-1.25)	1.190-0.004 (30.2-0.1)	0.874 + 0.004 (22.2+0.1)
0.049-0.079 (1.25-2.0)	1.197-0.004 (30.4-0.1)	
0.079-0.118 (2.0-3.0)	1.213-0.004 (30.8-0.1)	

Termination inches (mm)

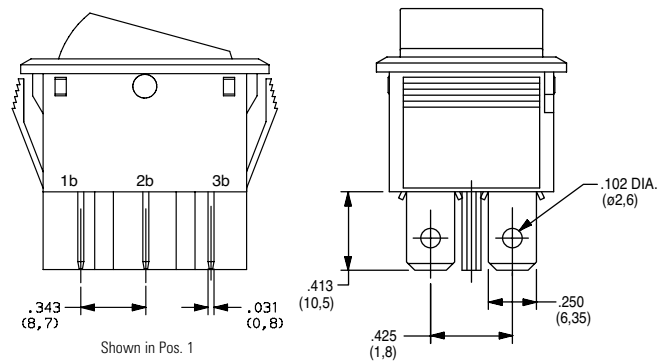
15 0.187" Quick Connect



Shown in Pos. 1

Note: Available with S1 & S2 mounting style and Q contact rating only.

05 0.250" Quick Connect



Shown in Pos. 1

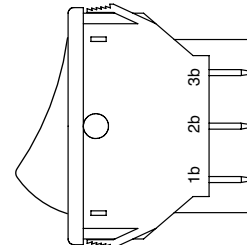
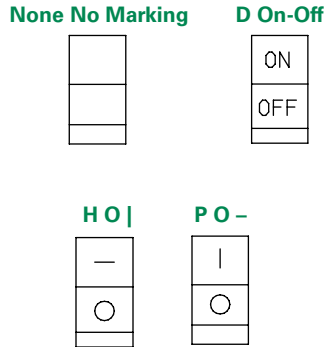
Note: Available with S3 & S4 mounting styles and QA contact rating, CN201 & CN202 switch functions only.

CN Series

Double Pole Power Rocker Switches



Actuator Markings



Shown in Pos. 1

Note: Orientation of actuator marking and terminals.

Contact Material

Option Code	Contact and Terminal Material	Ratings	
Q	Silver	Power	16A @ 125C 1/3 HP @ 125 V AC 10A @ 250 V AC ½HP @ 250 V AC
QA ¹	Silver	Power	16A @ 125 VAC, 1/8 HP @ 125 V AC; 10A @ 250 VAC, 1/3 HP @ 250 V AC

Notes:
1. QA is cURus

Lamp Rating

- (NONE)** No Lamp
- 7** 125 VAC 33kΩ Neon
- 8** 250 VAC 150kΩ Neon

Note: Lamp rating for J3 & J8 actuator option.

Disclaimer Notice - Information furnished is believed to be accurate and reliable. However, users should independently evaluate the suitability of and test each product selected for their own applications. Littelfuse products are not designed for, and may not be used in, all applications. Read complete Disclaimer Notice at <http://www.littelfuse.com/disclaimer-electronics>.