

# PTS820 Series

## Microminiature SMT Top Actuated



### Specifications

Function	Momentary action
Contact Arrangement	1 make contact = SPST NO
Terminals	J type for SMT
Travel	0.2mm + 0.1mm / -0.05 mm

### Electrical Characteristics

Max. Voltage	12 VDC
Max. Current DC	50 mA
Dielectric Strength	100 VA C (1mn)
Contact Resistance	≤ 100 mΩ
Insulation Resistance	≥ 100 MΩ
Bounce Time	≤ 10 ms

### Environmental Characteristics

Operating Temperature	-40°C to 85°C
-----------------------	---------------

### Description

The PTS820 series of microminiature SMT top actuated switches have a 3.9 x 2.9mm footprint and feature the option for three different heights. When combined with a reputation for being long-lasting and reliable, these switches are perfect for any keyless entry, remote control or control panel application a designer can dream up.

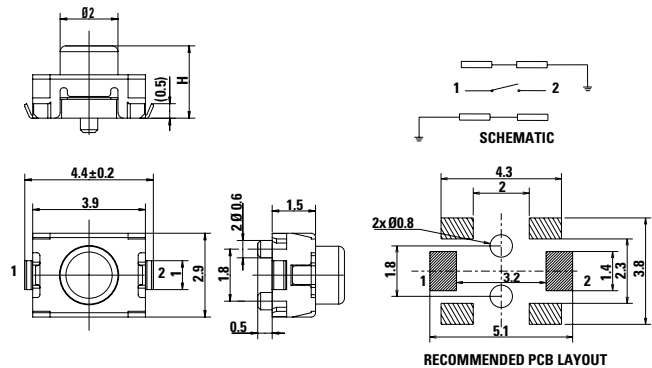
### Features & Benefits

- 3.9 x 2.9 mm footprint
- Three different heights
- High number of cycles
- Reduced footprint

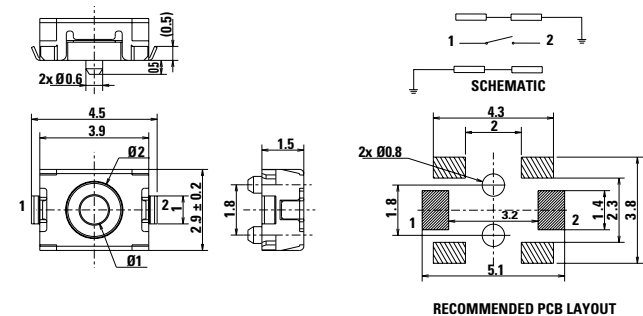
### Applications

- Control panels
- Remote controls
- Nomad devices
- Keyless entry system

### Dimensions (mm)



### 1.5 mm height (H) - version shown here with pegs



# PTS820 Series

## Microminiature SMT Top Actuated

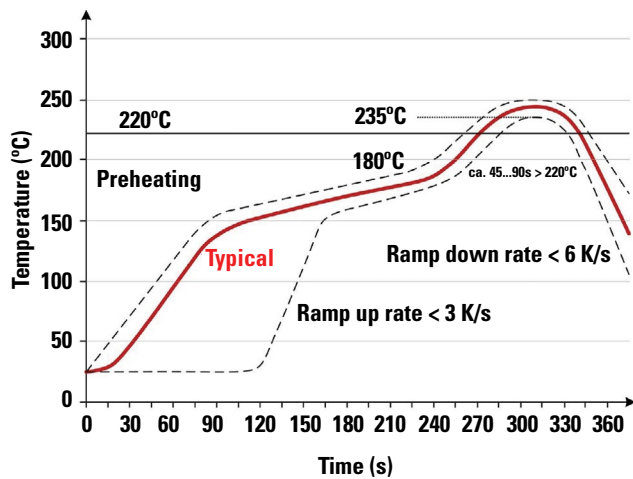


### Mechanical Characteristics

Item Description	Operation Force (gf)	Life Cycles	Height mm	Pegs
PTS820 J25M SMTR LFS	160 ± 50	200,000	2.5	No
PTS820 J25K SMTR LFS	250 ± 50	100,000		Yes
PTS820 J25MP SMTR LFS	160 ± 50	200,000		No
PTS820 J25KP SMTR LFS	250 ± 50	100,000		Yes
PTS820 J20M SMTR LFS	160 ± 50	200,000	2.0	No
PTS820 J20K SMTR LFS	250 ± 50	100,000		Yes
PTS820 J20MP SMTR LFS	160 ± 50	200,000		No
PTS820 J20KP SMTR LFS	250 ± 50	100,000	1.5	No
PTS820 J15M SMTR LFS	160 ± 50	200,000		Yes
PTS820 J15K SMTR LFS	250 ± 50	100,000		No
PTS820 J15MP SMTR LFS	160 ± 50	200,000		Yes
PTS820 J15KP SMTR LFS	250 ± 50	100,000		No

**Note:**  
 Specifications listed above are for switches with standard options. For information on specific and custom switches, consult Customer Service Center. The PTS series is not certified for using in Automotive application and no PPAP. However, in the case of some automotive accessories and specific applications for 2 and 3 wheeled vehicles the PTS is widely used and very suitable. Please contact your local C&K representative to discuss your application and the best switch solution.

### Soldering Profile



**Note:** Up to 2 reflow cycles in accordance with the above temperature profile

Soldering process: Depending on the application, this component is suited to the following methods:

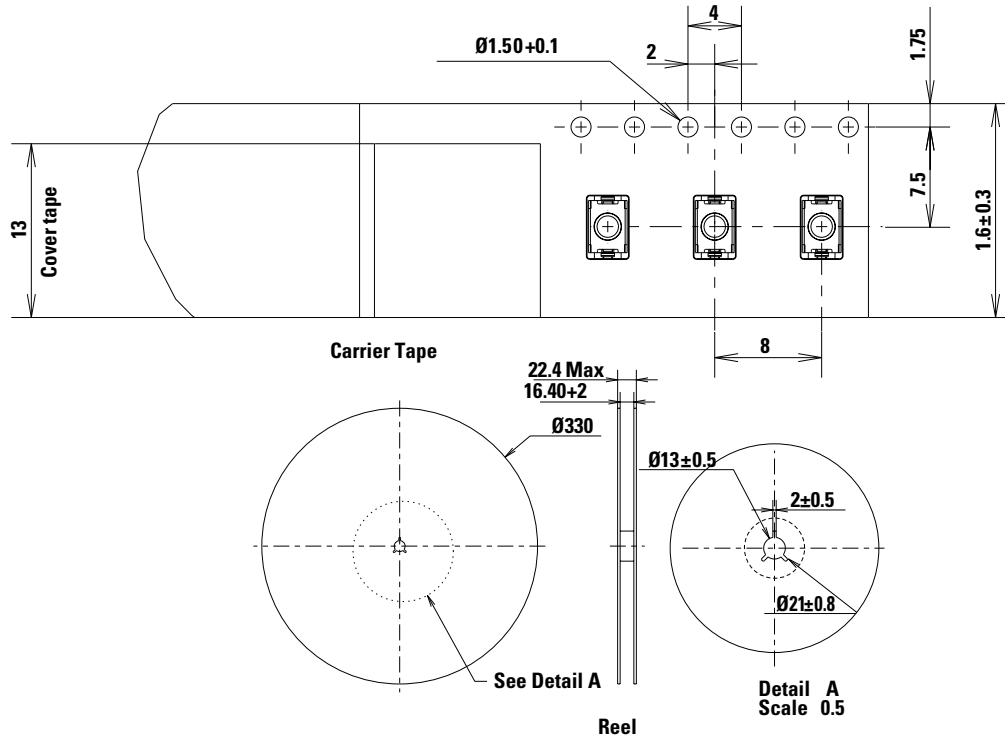
- This component is suited to the following methods: Infrared Reflow Soldering in accordance with J-STD-020
- Terminals being silver or gold plated over a nickel barrier, the use of slightly activated flux is suitable.
- Lead free soldering process in accordance with the definition on the left.

# PTS820 Series

## Microminiature SMT Top Actuated



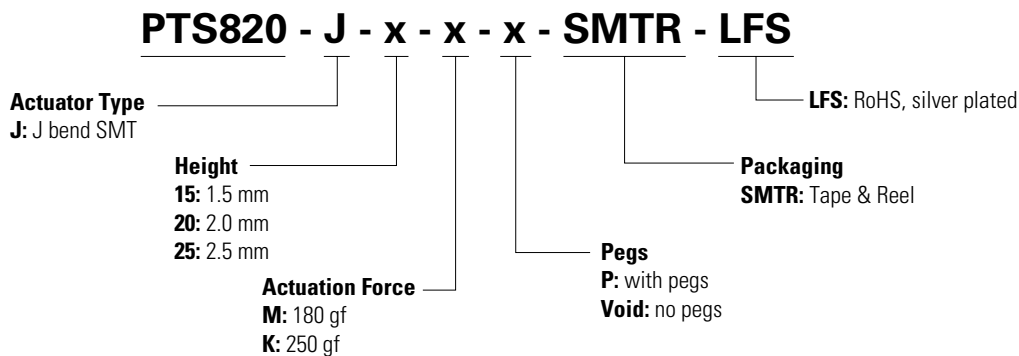
### Packaging Dimensions (mm)



**Note:** Switches in reels of 2,300 pieces for 2.5mm height  
 Switches in reels of 2,500 pieces for 2.0 mm height  
 Switches in reels of 3,000 pieces for 1.5 mm height  
 Dimensions of reels according to EIA 481B.  
 External diameter 330 mm.

### Ordering Number

Our easy build-a-switch concept allows you to mix and match options to create the switch you need. To order, select desired option from each category and place it in the appropriate box. For any part number different from those listed above, please consult your local representative.



### Liability Limitation

This datasheet does not provide enough information for applications that require a certain level of quality or safety such as automotive, medical systems, or safety equipment. Please contact customer service for the contractual specification package.

**Disclaimer Notice** - Information furnished is believed to be accurate and reliable. However, users should independently evaluate the suitability of and test each product selected for their own applications. Littelfuse products are not designed for, and may not be used in, all applications. Read complete Disclaimer Notice at <http://www.littelfuse.com/disclaimer-electronics>.